

Tubular cable lugs, Cu, F-series



- ▶ For fine and superfine stranded round conductors, e.g. to EN 60228 Cl. 5 and 6
- ▶ Pipe dimension adjusted for fine and superfine stranded conductors
- ▶ Special wide opening for the easy entry of fine conductors

Characteristics

- To DIN EN 61373 class 1B vibration-tested
- Simple and safe connection due to flat contact surfaces and internal chamfer
- Reliable assignment owed to item designation on the cable lug

Material

- Copper (EN13600)

Surface

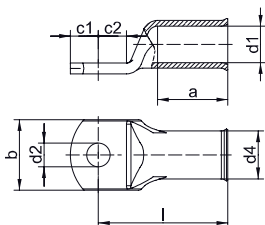
- Tin-plated to protect against corrosion

Technical instructions

- Tool: see page 1.33
- You will find further information on the cable descriptions in the technical appendix, page i-6

Additional information

- Possible as a special bright version on request. Part Number appendix „BK“
- 10 - 240 mm² UL-tested



Nominal cross section mm ²	Size of bolt dia.	Part No.	Dimension mm								Weight/ 100 pcs. ~ kg	Packing unit/pcs
			d1	a	b	d2	d4	c1	c2	l		
10	M5	702F5	5.5	14	12	5.5	8.0	6.25	7.5	27	0.72	100
	M6	702F6	5.5	14	12	6.5	8.0	6.25	7.5	27	0.71	100
	M8	702F8	5.5	14	16	8.4	8.0	9.00	9.5	29	0.77	100
	M10	702F10	5.5	14	16	10.5	8.0	10.50	11.5	31	0.82	100
	M12	702F12	5.5	14	19	13.0	8.0	12.00	13.0	32	0.82	100
16	M5	703F5	6.6	15	13	5.5	9.5	6.25	7.5	30	1.10	100
	M6	703F6	6.6	15	13	6.4	9.5	6.25	7.5	30	1.07	100
	M8	703F8	6.6	15	16	8.4	9.5	10.00	10.0	32	1.21	100
	M10	703F10	6.6	15	17	10.5	9.5	12.00	12.0	34	1.28	100
	M12	703F12	6.6	15	19	13.0	9.5	13.00	13.0	35	1.28	100
25	M5	704F5	7.9	17	15.5	5.3	11.0	7.50	7.5	32	1.52	25
	M6	704F6	7.9	17	15.5	6.5	11.0	7.50	7.5	32	1.50	100
	M8	704F8	7.9	17	17	8.4	11.0	10.00	10.0	34	1.61	100
	M10	704F10	7.9	17	17	10.5	11.0	12.00	12.0	37	1.71	100
	M12	704F12	7.9	17	19	13.0	11.0	13.00	13.0	38	1.74	25
35	M6	705F6	9.2	19	17.5	6.4	12.4	7.50	7.5	35	1.91	100
	M8	705F8	9.2	19	18	8.4	12.4	10.00	10.0	37	2.08	100
	M10	705F10	9.2	19	18	10.5	12.4	12.00	12.0	40	2.24	100
	M12	705F12	9.2	19	19	13.0	12.4	13.00	13.0	41	2.22	25
	M14	705F14	9.2	19	21	15.0	12.4	14.50	14.5	43	2.41	25
50	M6	706F6	11.0	21	21	6.4	15.0	10.00	10.0	41	3.54	25
	M8	706F8	11.0	21	21	8.4	15.0	10.00	10.0	41	3.44	50
	M10	706F10	11.0	21	21	10.5	15.0	12.00	12.0	43	3.64	50
	M12	706F12	11.0	21	21	13.0	15.0	13.00	13.0	46	3.73	50
	M14	706F14	11.0	21	23	15.0	15.0	14.50	14.5	48	3.89	25
	M16	706F16	11.0	21	28	17.0	15.0	16.00	16.0	50	4.02	25

See next page