

Angled tubular cable lugs, Cu, 90° and 45° angled, F-series



- ▶ For fine and superfine stranded round conductors, e.g. to EN 60228 Cl. 5 and 6
- ▶ Tube dimension adjusted for fine and superfine stranded conductors
- ▶ Special wide opening for the easy entry of fine conductors
- ▶ Flat contact surface by special angle pressing technology

Characteristics

- Tube dimensions suitable for fine stranded conductors
- Flat contact surface and internal chamfer for simple cable insertion

Material

- Copper (EN13600)

Surface

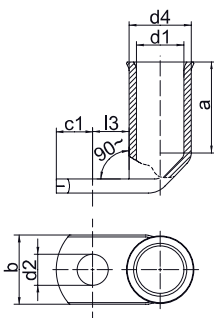
- Tin-plated to protect against corrosion

Technical instructions

- Tool: see page 1.33
- You will find further information on the cable descriptions in the technical appendix, page i-6

Additional information

- Possible as a special version with inspection hole on request. Part Number appendix „MS“
- Possible as a special 45° angled version on request. Part Number appendix „45“
- 90° angled version: 10 - 240 mm² UL-tested



Nominal cross section mm ²	Size of bolt dia.	Part No.	Dimension mm							Weight/ 100 pcs. ~ kg	Packing unit/pcs
			d1	a	b	d2	d4	c1	l3		
10	M5	742F5	5.5	14	12	5.3	8.0	6.25	10.5	0.80	50
	M6	742F6	5.5	14	12	6.4	8.0	6.25	10.5	0.78	50
	M8	742F8	5.5	14	16	8.4	8.0	9.00	12.5	0.84	50
	M10	742F10	5.5	14	16	10.5	8.0	10.50	14.5	0.88	50
	M12	742F12	5.5	14	19	13.0	8.0	12.00	16.0	0.90	50
16	M5	743F5	6.6	15	13	5.3	9.5	6.25	9.5	1.12	50
	M6	743F6	6.6	15	13	6.4	9.5	6.25	9.5	1.12	50
	M8	743F8	6.6	15	16	8.4	9.5	10.00	13.0	1.30	50
	M10	743F10	6.6	15	17	10.5	9.5	12.00	15.0	1.38	50
	M12	743F12	6.6	15	19	13.0	9.5	13.00	16.0	1.34	50
25	M5	744F5	7.9	17	15	5.3	11.0	7.50	10.5	1.52	25
	M6	744F6	7.9	17	15	6.4	11.0	7.50	10.5	1.54	25
	M8	744F8	7.9	17	17	8.5	11.0	10.00	13.0	1.80	25
	M10	744F10	7.9	17	17	10.5	11.0	12.00	15.0	1.79	25
	M12	744F12	7.9	17	19	13.0	11.0	13.00	16.0	1.76	25
35	M6	745F6	9.2	19	17	6.5	12.4	7.50	10.5	2.02	25
	M8	745F8	9.2	19	18	8.5	12.4	10.00	13.0	2.18	25
	M10	745F10	9.2	19	18	10.5	12.4	12.00	15.0	2.30	25
	M12	745F12	9.2	19	19	13.0	12.4	13.00	16.0	2.26	25
50	M6	746F6	11.0	21	21	6.4	15.0	10.00	10.0	3.75	25
	M8	746F8	11.0	21	21	8.5	15.0	10.00	10.0	3.57	25
	M10	746F10	11.0	21	21	10.5	15.0	12.00	15.0	3.83	25
	M12	746F12	11.0	21	21	13.0	15.0	13.00	16.0	3.74	25
	M14	746F14	11.0	21	23	15.0	15.0	14.50	17.5	4.20	25

See next page