

Insulated solderless terminals, fork type



- ▶ For fine and superfine stranded conductors, e.g. to EN 60228 Cl. 5 and 6
- ▶ Dimensions in the crimp area to DIN 46237
- ▶ High-quality brazing process in the crimp area
- ▶ Simple fork-type mounting
- ▶ Insulation sleeve halogen-free

Characteristics

- Heat resistant to 105 °C
- Easy-Entry insulation for simple cable insertion
- Cross-section-dependent colour-coding

Material

- Copper (ETP)
- Insulation sleeve: PA

Surface

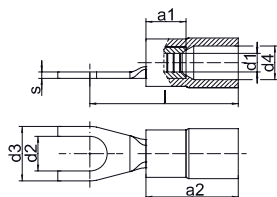
- Tin-plated to protect against corrosion

Technical instructions

- Tool: see page 1.157
- You will find further information on the cable descriptions in the technical appendix, page i-6

Additional information

- 0.1 - 0.4 mm² not CSA-tested
- * = not standardised



Nominal cross section mm ²	Nominal size to DIN	Part No.	Colour	Hint	Dimension mm								Weight/ pcs. ~kg	Packing unit/pcs
					a1	a2	d1	d2	d3	d4	l	s		
0.1 - 0.4	--	619C3	Yellow	*	--	--	--	3.2	5.0	--	14.0	0.5	0.020	100
	3.0 - 1	620C3	Red		5	10.5	1.6	3.2	6.0	4.5	16.5	0.8	0.060	100
	3.5 - 1	620C35	Red		5	10.5	1.6	3.7	6.8	4.5	17.5	0.8	0.060	100
0.5 - 1	4.0 - 1	620C4	Red		5	10.5	1.6	4.3	6.8	4.5	17.5	0.8	0.070	100
	5.0 - 1	620C5	Red		5	10.5	1.6	5.3	10.0	4.5	18.5	0.8	0.090	100
	--	620C6	Red	*	5	10.5	1.6	6.5	11.0	4.5	20.5	0.8	0.080	100
	3.0 - 2.5	630C3	Blue		5	11.5	2.3	3.2	6.0	5.1	17.5	0.8	0.060	100
	3.5 - 2.5	630C35	Blue		5	11.5	2.3	3.7	6.8	5.1	18.5	0.8	0.065	100
1.5 - 2.5	4.0 - 2.5	630C4	Blue		5	11.5	2.3	4.3	6.8	5.1	18.5	0.8	0.080	100
	5.0 - 2.5	630C5	Blue		5	11.5	2.3	5.3	10.0	5.1	20.5	0.8	0.090	100
	6.0 - 2.5	630C6	Blue		5	11.5	2.3	6.5	11.0	5.1	22.5	0.8	0.110	100
	4.0 - 6	650C4	Yellow		6	12.5	3.6	4.3	8.0	6.5	20.5	1.0	0.140	100
	5.0 - 6	650C5	Yellow		6	12.5	3.6	5.3	10.0	6.5	21.5	1.0	0.160	100
4 - 6	6.0 - 6	650C6	Yellow		6	12.5	3.6	6.5	11.0	6.5	22.5	1.0	0.170	100
	8.0 - 6	650C8	Yellow		6	12.5	3.6	8.4	14.0	6.5	25.5	1.0	0.220	100
	10.0 - 6	650C10	Yellow		6	12.5	3.6	10.5	18.0	6.5	27.5	1.0	0.280	100