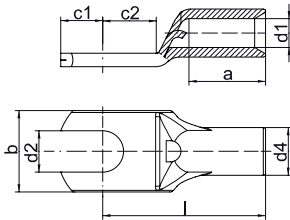


Tubular cable lugs, Cu, fork type



- ▶ Cable lug to 6 mm² for fine-stranded round conductors Cl. 5, 10 mm² and 16 mm² for multi-stranded round conductors Cl. 2, e.g. to EN 60228
- ▶ Simple fork-type mounting
- ▶ Simple processing thanks to inspection hole to check the inserted conductor

Characteristics

- Simple and safe connection due to flat contact surfaces and internal chamfer
- Item identification on cable lug

Material

- Copper (EN13600)

Surface

- Tin-plated to protect against corrosion

Technical instructions

- Tool: see page 1.30
- You will find further information on the cable descriptions in the technical appendix, page i-6

Nominal cross section mm ²	Size of bolt dia.	Part No.	Dimension mm								Weight/ 100 pcs. ~ kg	Packing unit/pcs
			d1	a	b	d2	d4	c1	c2	l		
0.75	M3	91C3	1.3	6	6.0	3,2	2.8	3.25	4.0	12	0.06	100
	M4	91C4	1.3	6	6.5	4,3	2.8	4.00	5.0	13	0.05	100
	M5	91C5	1.3	6	7.5	5,3	2.8	4.75	5.5	14	0.06	100
1.5	M3	92C3	1.8	6	6.5	3,2	3.3	3.25	4.0	12	0.07	100
	M4	92C4	1.8	6	6.5	4,3	3.3	4.00	5.0	13,5	0.07	100
	M5	92C5	1.8	6	7.5	5,3	3.3	4.75	5.5	14	0.07	100
2.5	M6	92C6	1.8	6	9.0	6,4	3.3	6.50	6.5	16	0.08	100
	M4	93C4	2.3	6	7.5	4,3	4.2	4.00	5.0	13	0.11	100
	M5	93C5	2.3	6	8.5	5,3	4.2	4.75	5.5	14	0.12	100
4	M6	93C6	2.3	6	9.5	6,4	4.2	6.50	6.5	16	0.10	100
	M4	94C4	3.0	8	8.5	4,3	5.0	4.75	5.5	17	0.19	100
	M5	94C5	3.0	8	9.0	5,3	5.0	4.75	6.0	17	0.19	100
6	M6	94C6	3.0	8	10.0	6,4	5.0	6.50	6.5	19	0.21	100
	M8	94C8	3.0	8	13.0	8,5	5.0	8.50	9.5	22	0.24	100
	M4	95C4	4.0	9	9.5	4,3	6.0	5.00	5.5	18	0.27	100
10	M5	95C5	4.0	9	9.5	5,3	6.0	6.00	6.0	19	0.32	100
	M6	95C6	4.0	9	10.0	6,4	6.0	7.00	6.5	19	0.27	100
	M8	95C8	4.0	9	14.0	8,5	6.0	8.50	9.0	22	0.31	100
16	M5	96C5	4.5	10	12.0	5,3	7.0	6.50	7.5	22	0.45	100
	M6	96C6	4.5	10	12.0	6,4	7.0	6.50	7.5	22	0.41	100
	M8	96C8	4.5	10	15.0	8,4	7.0	10.00	10.0	25	0.52	100
16	M5	97C5	5.5	13	12.0	5,3	8.5	5.50	6.5	26	0.81	100
	M6	97C6	5.5	13	12.0	6,4	8.5	6.25	7.5	27	0.81	100
	M8	97C8	5.5	13	15.0	8,4	8.5	8.50	9.5	29	0.90	100